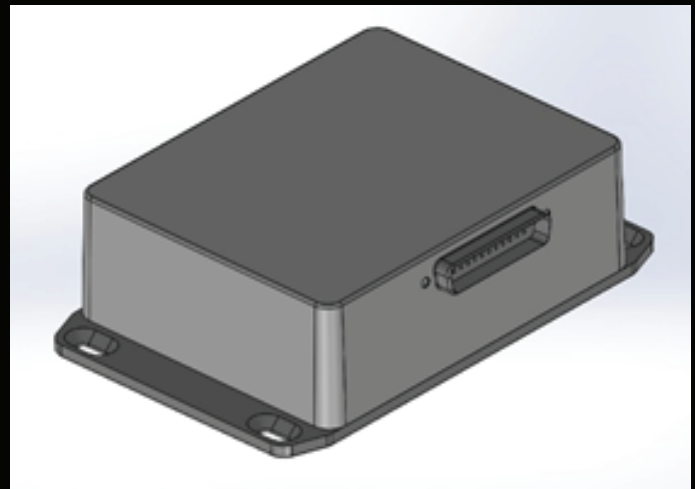




The Video Converter Unit

Compatible with RS-170 Composite Video Signals

The Video Converter Unit was designed to convert the RS-170 Composite Video from the Astronics Max-Viz 600, 1200, 1400, and 2300 sensor into either a single or dual Apple Lightning, USB-C or Ethernet signal for display on previously installed Apple iPad(s) or Android devices. Even though it was designed for



the Astronics Max-Viz sensors, it can be used with any RS-170 Composite Video Signal. In addition to converting the video, the units also provides charging power to the iPad(s). The Video Converter Unit is designed and manufactured to high quality industry standards and quality controlled. However, it is designed and manufactured for a specific application outside of the existing Technical Standard Orders (TSO). The Video Converter Unit comes with installation and operating instructions and has been installed on both fixed wing and rotorcraft in Canada, US, and Europe.